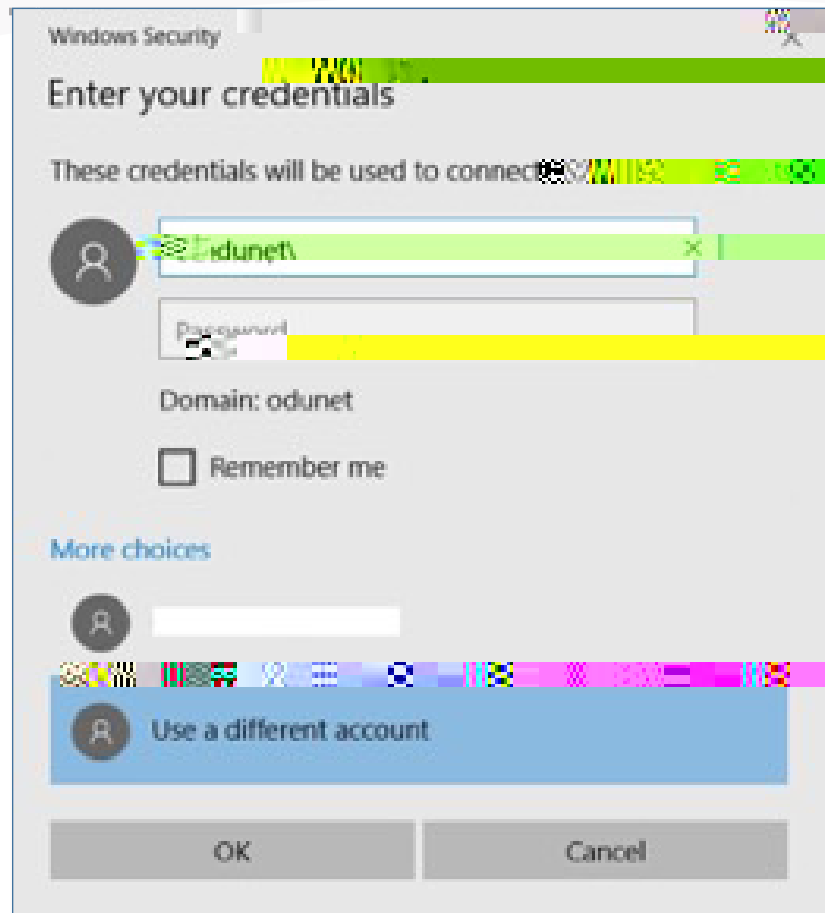


In order to access your ODU computer using Remote Desktop, your remote computer needs to be connected to the campus VPN.

VPN Access

1.

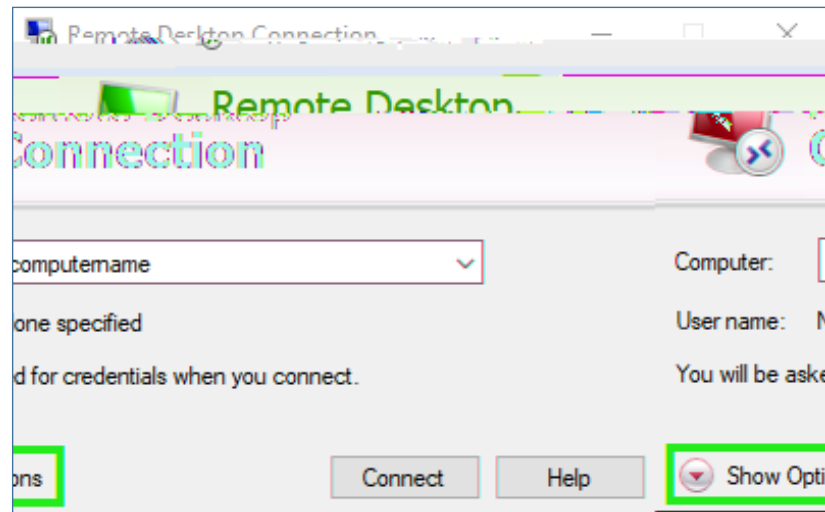
5. Enter your MIDAS credentials (the ones you use to log into your work computer), with **odunet** in front of your username, as shown. Click **OK**.



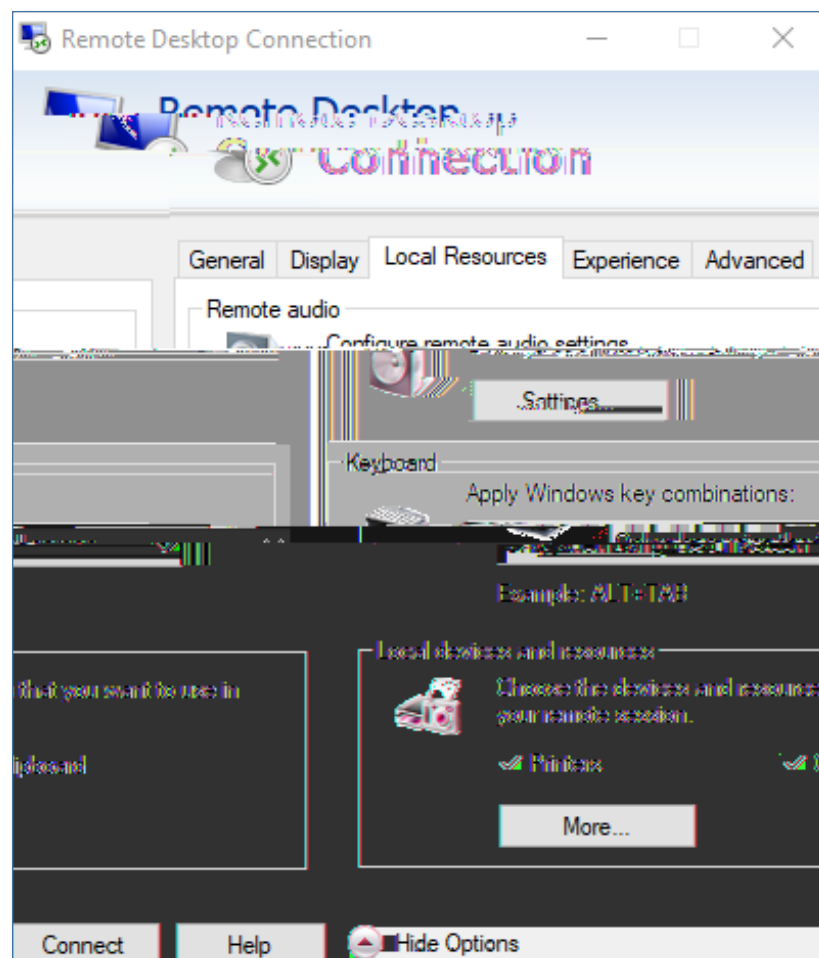
Advanced Features of Remote Desktop

The *Remote Computer* is the computer you are connecting *to* through Remote Desktop. The *Home Computer* is the computer you are connecting *from*.

From the Remote Desktop startup screen on your Home Computer, click **Show Options**.

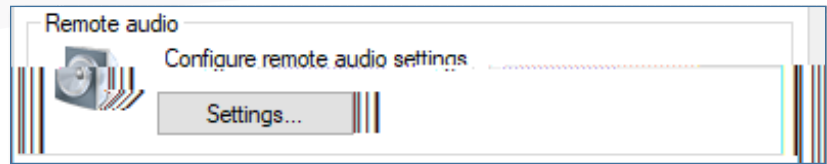


The most common advanced features are under the **Local Resources** tab.

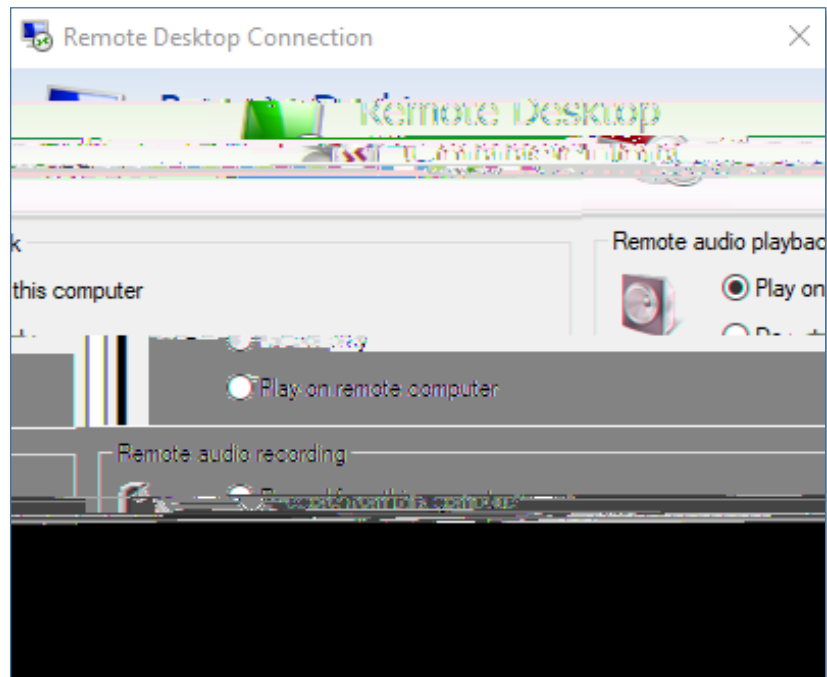


Remote audio

Click the Remote audio **Settings** button.



Select where you want the sound from your Remote Computer to play: on your Home Computer, nowhere, or only on your Remote Computer. Click **OK**.

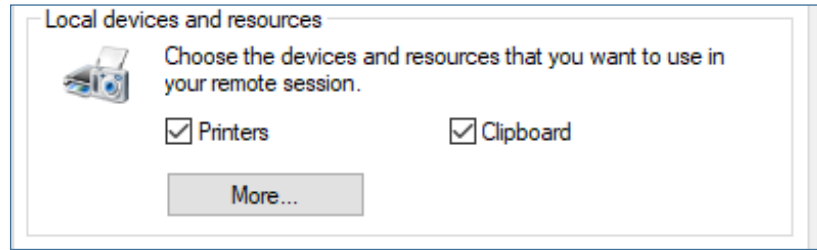


Local devices and resources (printers and drives)

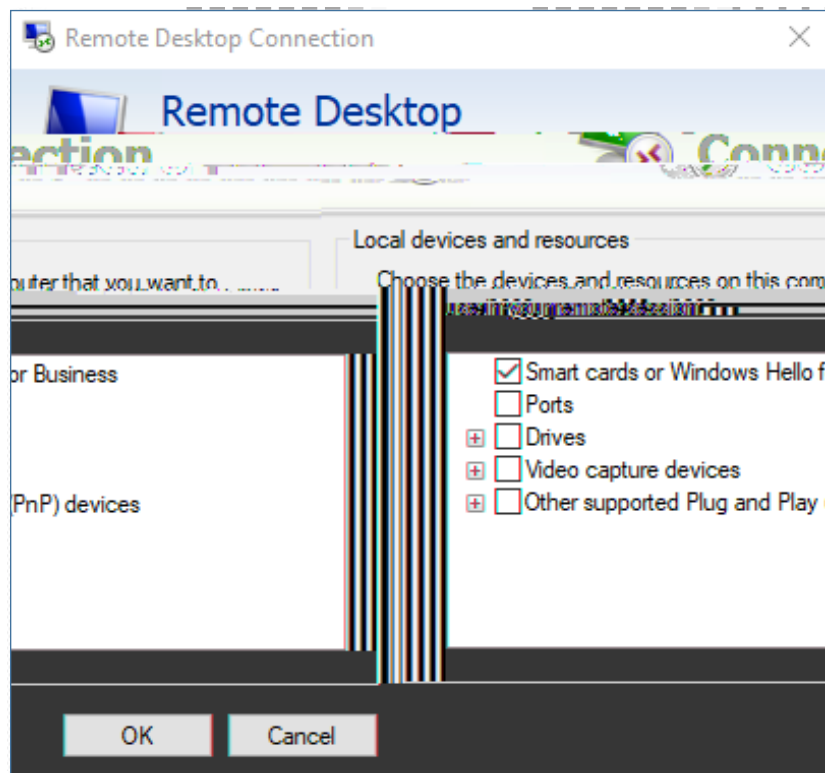
Check the box next to **Printers** so your home printer appears as an option when you print from the Remote Computer.

Check the box next to **Clipboard** so that things you copy on your Home Computer (using "Ctrl+C" or the "Copy" menu option) can be pasted into documents on your Remote Computer.

Click the **More** button for more options.



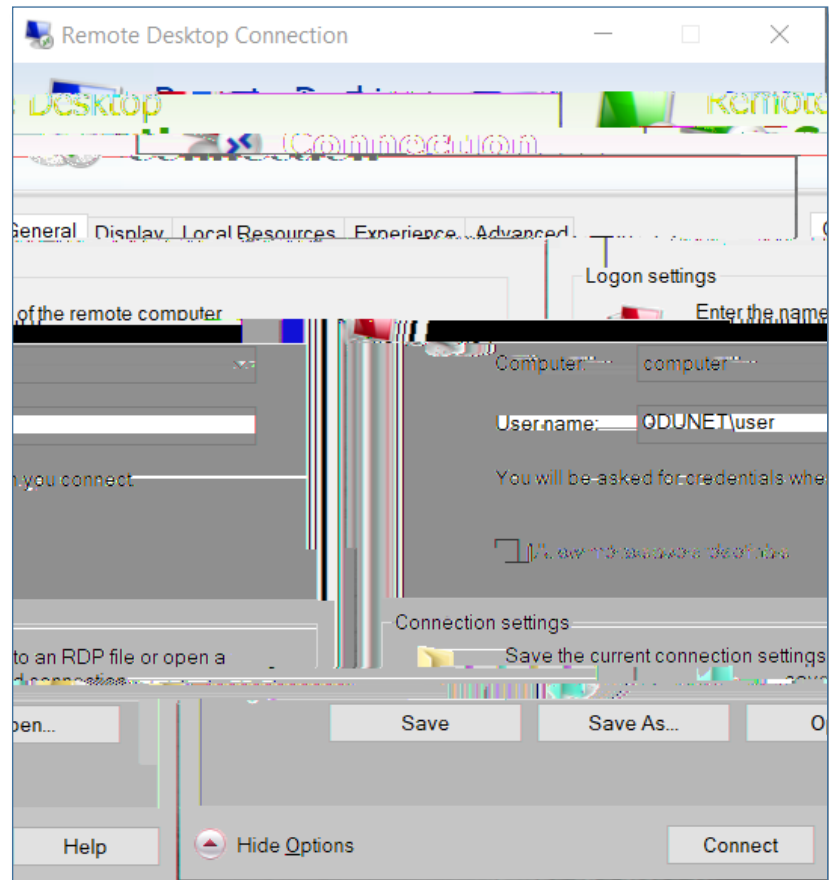
Here you can choose to use your Home Computer's camera to record to your Remote Computer, or make your Home Computer's files available to work with on your Remote Computer. You can also work with any peripherals you have plugged into your Home Computer, like scanners or drawing tablets.



Save your connection settings

Once you have your settings just right, save them as an RDP file to your Home Computer's desktop or documents folder.

1. Go to the **General** tab and click the **Save As...** button.



2. Give your connection file a name, and choose where to save it.
3. For future connections, just double click the RDP file (wherever you've saved it) to connect immediately with your saved settings.

Note: We do not advise that you click the "Allow me to save credentials" checkbox. Future password changes will render your settings and RDP file unusable.